

Uniclass L7315	EPIC J3413
Cl/SfB (52.5)	

ACO Water Management: Building + Landscape

ACO HexDrain®

- ✓ Ideal for domestic applications
- ✓ Easy and quick to install
- ✓ Choice of 6 'Complete the Look' gratings
- ✓ Full accessory pack aids professional installation
- ✓ CE marked and fully certified to Load Class A 15 BS EN 1433:2002



ACO HexDrain®

The ideal drainage channel for domestic applications

Manufactured from recycled polypropylene, ACO HexDrain® is suitable for domestic applications.

The high quality ACO HexDrain® channels clip together, allowing for quick and easy installation.

ACO's range of elegant and modern 'Complete the Look' gratings are available to provide choice and style to driveway and patio projects. A choice of six gratings are available to provide the perfect finish:

- Wedge Wire Stainless Steel
- Antique Iron
- Polished Stainless Steel
- Anthracite
- Galvanised Steel
- Black Plastic

A full range of accessories are available, designed to aid simple and fast installation.

Typical applications

- ▶ Garage Thresholds
- ▶ Patios and paths
- ▶ Pedestrian precincts



ACO HexDrain®

System Overview



Pedestrian, cycleways, minimally trafficked areas (light domestic vehicles only)*.

Features



*A 15 products are tested to a loading of 1.5 tonnes. No A 15 products are suitable for trafficking by heavy domestic vehicles such as 4x4s or SUVs.

ACO HEXDRAIN ACCESSORIES



ACO HexDrain® channel assembly

Product code	Description	Length (mm)	Width (mm)	Height (mm)	Weight (kg)
19310	Channel with black plastic grating 1m	1000	125	80	1.4
19313	Channel with galvanised steel grating 1m	1000	125	80	1.9

ACO HexDrain® options and accessories

Product code	Description	Length (mm)	Width (mm)	Height (mm)	Weight (kg)
19559	Corner unit with black plastic grating with vertical outlet	125	125	125	0.2
19558	Black plastic sump unit	174	Ø118	250	0.3
19287	Accessory bag	-	-	-	0.2
319288	Closing End Cap	6	129	97	0.03

Gratings

Product code	Description	Length (mm)	Width (mm)	Depth (mm)	Weight (kg)
10323	Wedge Wire Stainless Steel	1000	118	15	3
38512	Antique Iron	500	118	15	2.3
310307	Polished Stainless Steel	1000	118	15	1.2
10305	Anthracite	1000	118	15	1.3
38516	Galvanised Steel	1000	118	15	1.3
319250	Black Plastic	1000	118	15	0.7



ACO HEXDRAIN INSTALLATION



Dig trench 175mm wide by 130mm deep for channel (400mm deep for sump). Mark finishing height with fixed line 3mm below final surface. Lay 50mm (min.) bed of concrete.



If using sump unit as outlet cut off outlet spigot, position sump in concrete bed and fit PVC-U Ø110mm pipework connection to drainage.



Knock out preformed base of corner unit and remove appropriate cut-out for channel connection. Connect corner unit to sump. Check line and level of corner unit and backfill with concrete.

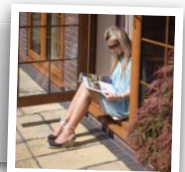


Lay channels from outlet corner unit ensuring joints clip together. Fit endcaps. With gratings fitted haunch around channels with concrete or suitable fill material. Final surface to be 3-5mm above grating.

COMPLETE THE LOOK



Try our selector to see how your patio or driveway might look with our new grating range.
www.aco.co.uk/completethelook



ACO Technologies plc

ACO Business Park, Hitchin Road, Shefford, Bedfordshire SG17 5TE
Tel: 01462 816666 Fax: 01462 815895
e-mail: technologies@aco.co.uk website: www.aco.co.uk